

### MAIN FEATURES

- Good slide and wear properties
- Resistant to many oils, greases and fuels
- High toughness
- Good machinability
- High strength
- Good weldable and bondable

COLOUR Natural

### PROPERTIES

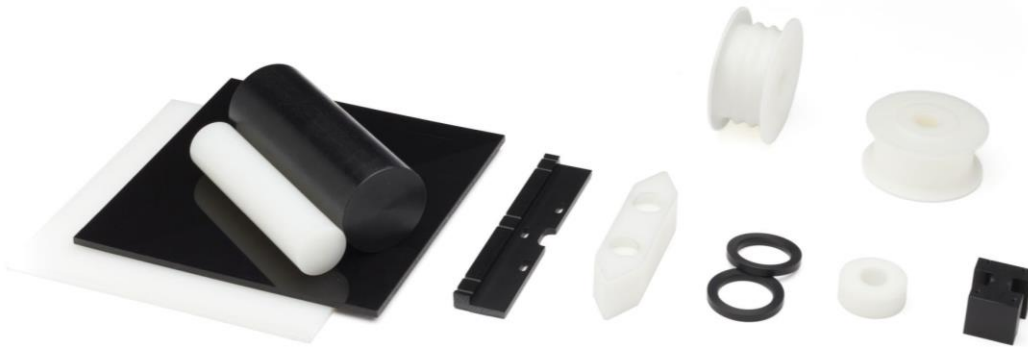
	Typical value	Units	Test method
DENSITY	1.14	g/cm <sup>3</sup>	
WATER ABSORPTION	6	%	DIN EN ISO 62
FLAMMABILITY (UL94)	HB		DIN IEC 60695-11-10

### MECHANICAL PROPERTIES

	Typical value	Units	Test method
MODULUS OF ELASTICITY	3300	Mpa	DIN EN ISO 527-2
TENSILE STRENGTH	79	Mpa	DIN EN ISO 527-2
TENSILE STRENGTH AT YIELD	78	Mpa	DIN EN ISO 527-2
ELONGATION AT YIELD	4	%	DIN EN ISO 527-2
ELONGATION AT BREAK	130	%	DIN EN ISO 527-2
FLEXURAL STRENGTH	100	MPa	DIN EN ISO 178
MODULUS OF ELASTICITY	2900	Mpa	DIN EN ISO 178
COMPRESSION STRENGTH	24/41	MPa	EN ISO 604
COMPRESSION MODULUS	2700	Mpa	EN ISO 604
IMPACT STRENGTH	Not broken	kJ/m <sup>2</sup>	DIN EN ISO 179-1eU
NOTCHED IMPACT STRENGTH	7	kJ/m <sup>2</sup>	DIN EN ISO 179-1eA

### THERMAL PROPERTIES

	Typical value	Units	Test method
GLASS TRANSITION TEMPERATURE	45	°C	DIN 53765
MELTING TEMPERATURE	220	°C	DIN 53765
SERVICE TEMPERATURE (LONG TERM)	100	°C	
SERVICE TEMPERATURE (SHORT TERM)	160	°C	



### ELECTRICAL PROPERTIES

	Typical value	Units	Test method
SPECIFIC SURFACE RESISTANCE	$10^{14}$	$\Omega$	DIM IEC 60093
SPECIFIC VOLUME RESISTANCE	$10^{14}$	$\Omega \cdot \text{cm}$	DIM IEC 60093

### AVAILABLE

#### SEMI-FINISHED PRODUCTS

SHEETING	1 to 100 mm*
ROD	$\varnothing$ 4 to $\varnothing$ 300 mm*
TUBE	At request

\* Other dimensions can be delivered at request.

*We produce customized finished polyamide 6 products according to your specifications.*

*This can be based on a drawing or model.*

*Any questions about products or make an enquiry? Simply call +31 180 46 34 71 or send us an e-mail at [sales@ridderflex.nl](mailto:sales@ridderflex.nl)*